

INSTRUCTIONS FOR ORDERING PARTS

All service parts should be ordered through your authorized H&S dealer. He will be able to give you faster service if you will provide him with the following.

1. Model & Serial Number - Both can be located on the right side main frame of your unit.
2. All reference to left or right apply to the machine as viewed from the rear.
3. Parts should not be ordered from illustration only. Please order by complete part number.
4. If your dealer has to order parts - give shipping instructions.

VIA truck - large pieces (please specify local truck lines)

VIA United Parcel Service (include full address)

H&S Mfg. Co.	
MARSHFIELD, WIS.	
MOD. NO.	<input type="text"/>
SER. NO.	<input type="text"/>

PLEASE RECORD NUMBERS FOR YOUR UNIT FOR QUICK REFERENCE

ABOUT IMPROVEMENTS

H&S IS CONTINUALLY STRIVING TO IMPROVE ITS' PRODUCTS.

We must therefore, reserve the right to make improvements or changes whenever it becomes practical to do so, without incurring any obligation to make changes or additions to the equipment previously sold.

DECAL LOCATION

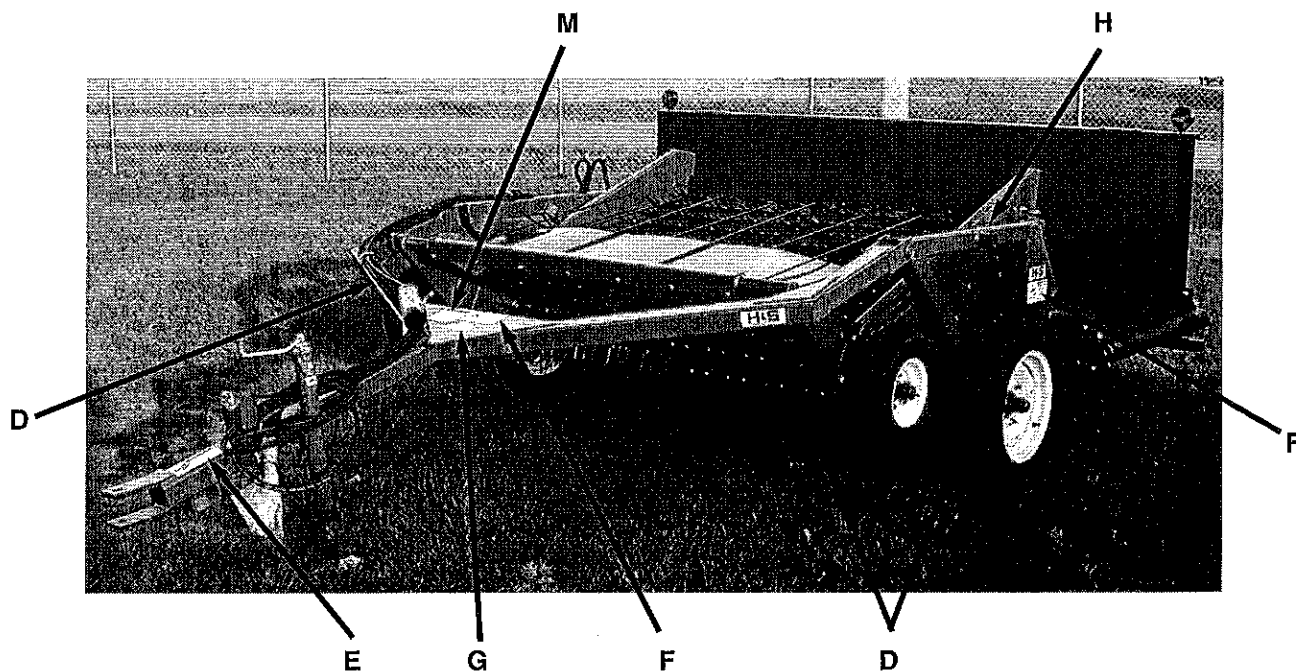
Your H&S Mini Merger was manufactured with operator safety in mind. Located on the windrow merger are various decals to aid in operation, and warn of danger or caution areas. Pay close attention to all the decals on your Mini Merger.



DO NOT REMOVE ANY OF THESE DECALS. IF DECALS ARE LOST, DAMAGED, OR IF MINI MERGER IS REPAINTED, REPLACE DECALS. REMEMBER: DECALS ARE FOR YOUR PROTECTION AND SAFETY.

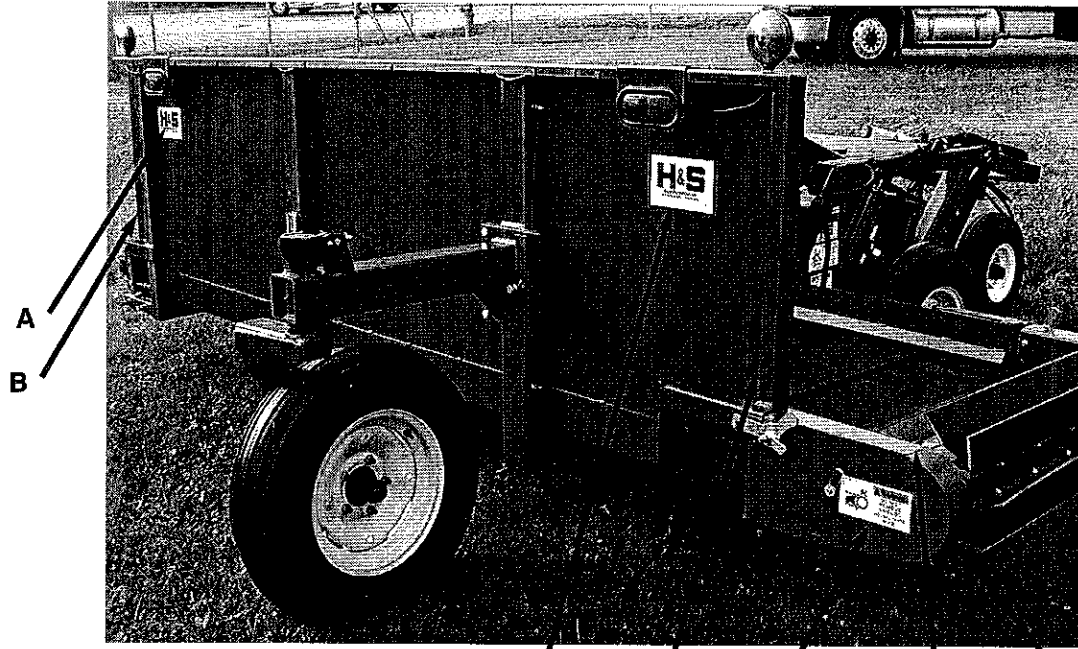
Listed below are the decals on your Mini Merger. These decals may be ordered individually by part number or by ordering a complete set.

ITEM	PART NO.	DESCRIPTION
A.		(2) H&S Decal (6" x 12")
B.		(2) Red Reflective (2" x 9")
C.	1494K	(2) Warning - Do Not Remove Shields
D.	D12	(4) H&S Decal
E.	11599	(2) Warning - Do Not Go Near Leaks
F.	3398A	(3) Danger - Stay Clear
G.	3398C	(2) Danger - Shut Engine Off Completely
H.	71188B	Jack Storage Position
I.	73101	(2) Danger - Stay Clear of Moving Parts (W/Accelerator Only)
J.		Serial #
K.	3894	(2) Warning - Do Not Operate (W/Accelerator Only)
L.	1494B	(2) Warning - Do Not Remove (W/Accelerator Only)
M.	5896A	Warning - Help Avoid Injury
N.	11601MM1	Operator Manual Holder Complete Set of Decals
Paint - H&S Red		
	ZX21	Gallon
	ZX22	Quart
	ZX23	Pint

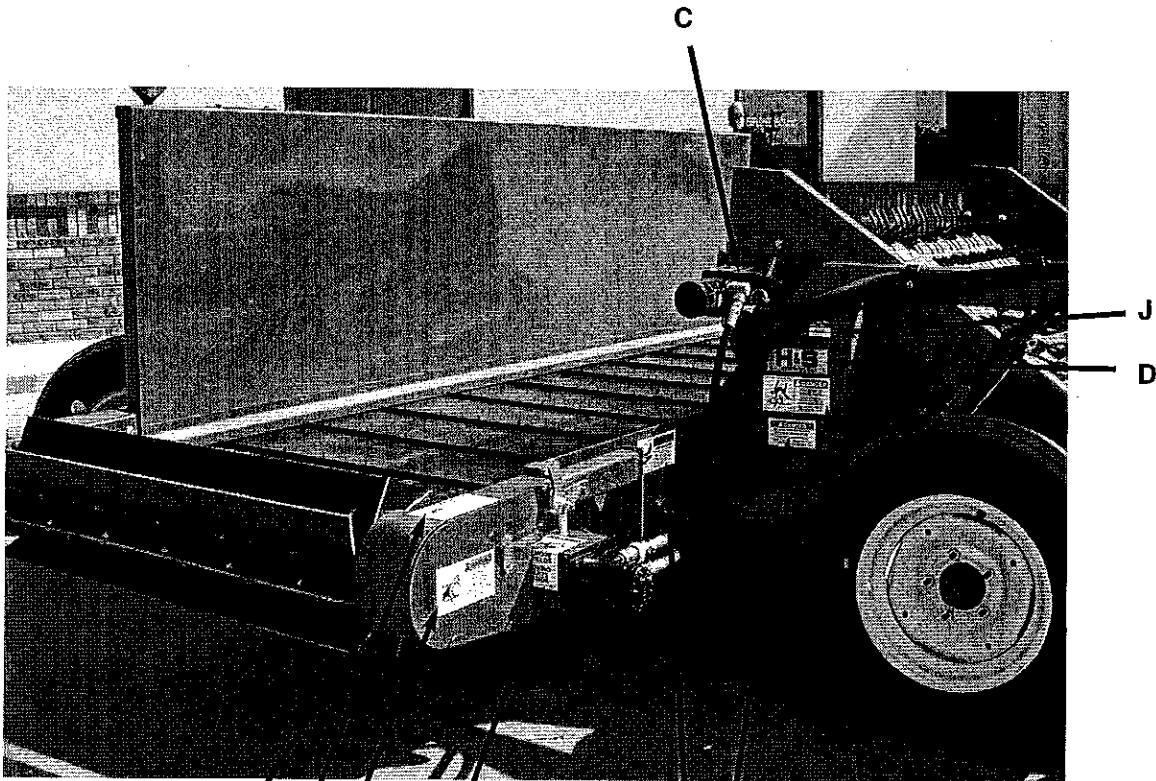


(Continued)

DECAL LOCATION (Continued)

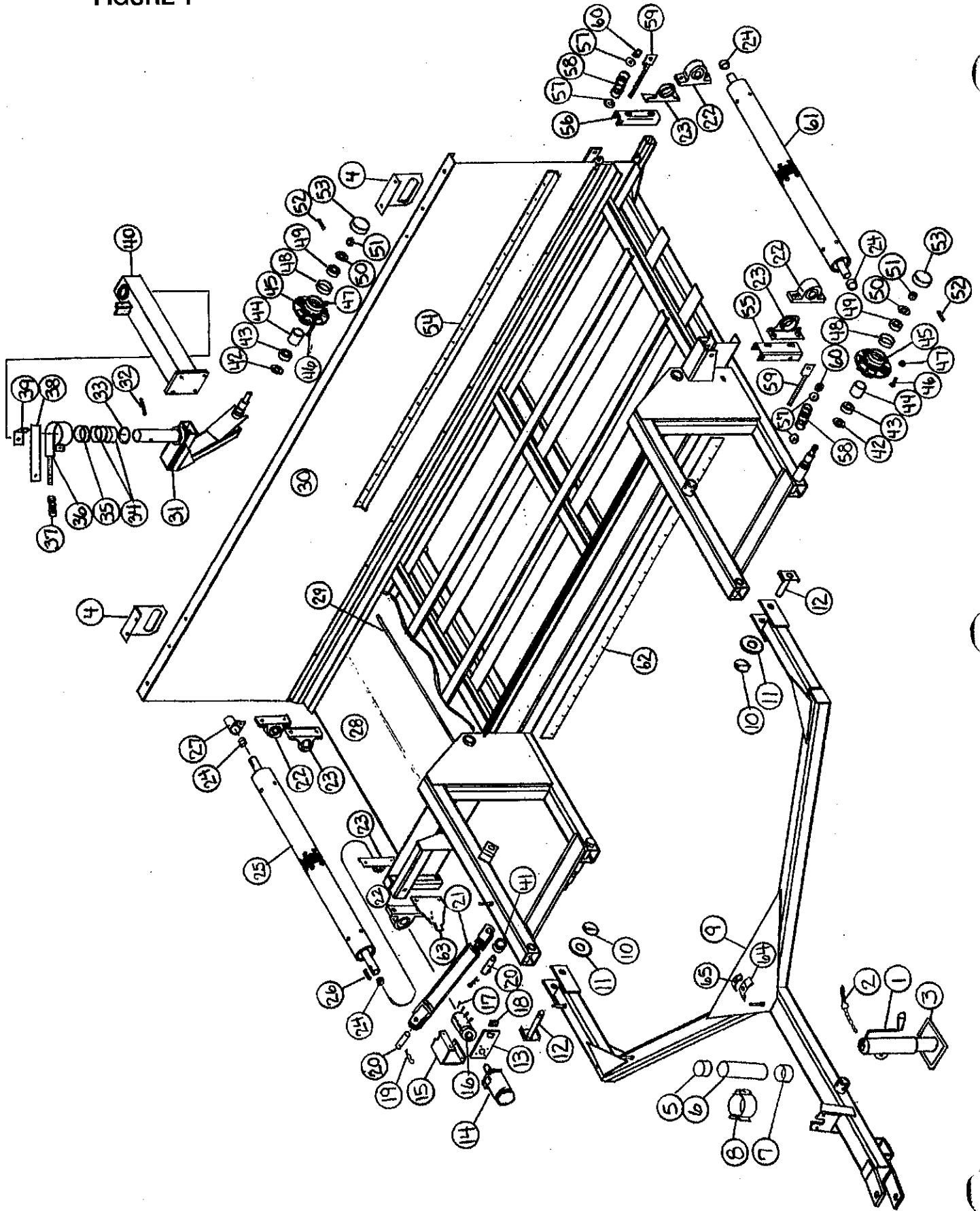


A B L I K
(Behind Shield)



K I L C E G F
(Behind Shield)

FIGURE 1



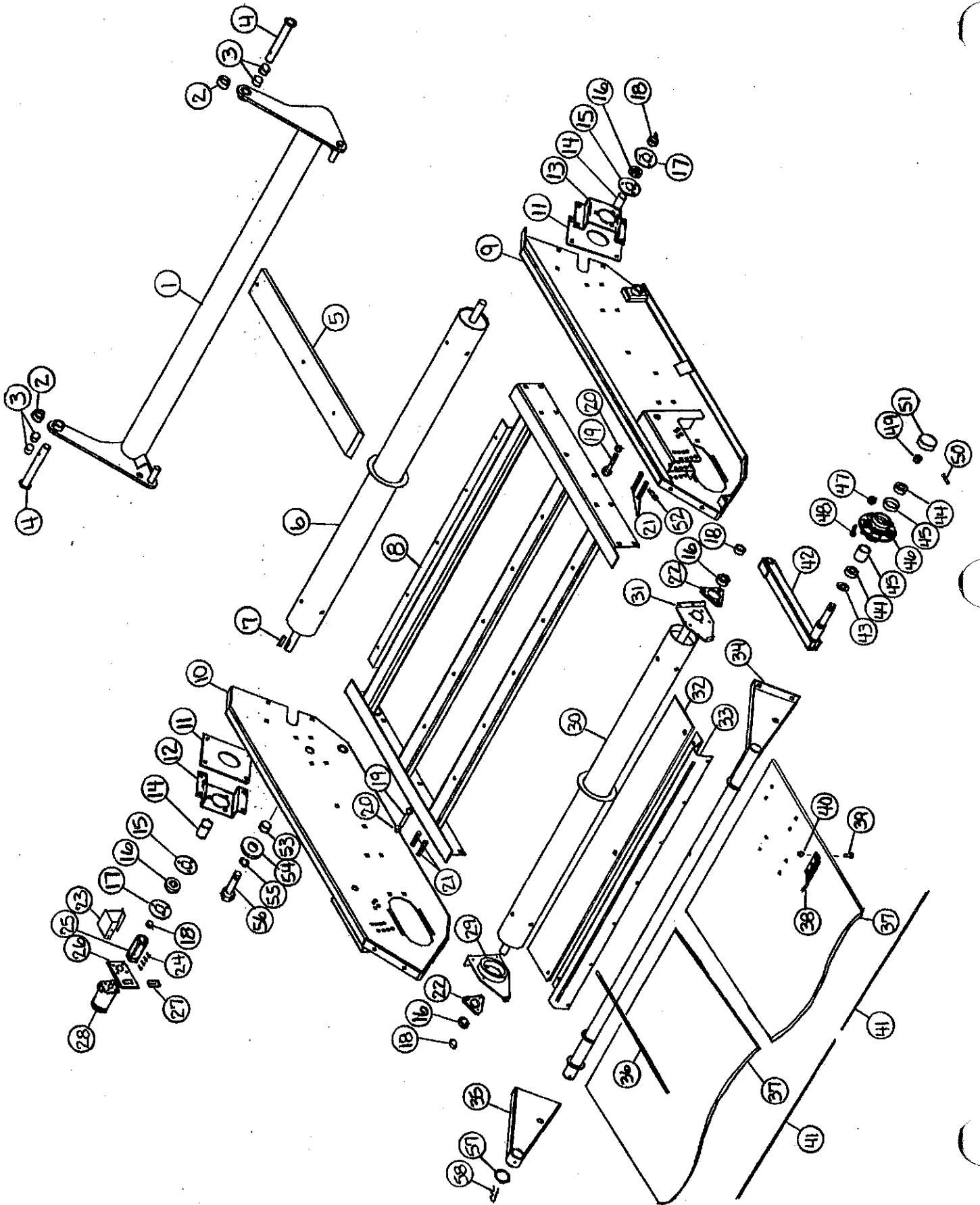
**FIGURE 1
MINI MERGER MAIN FRAME/POLE**

ITEM	PART NO.	DESCRIPTION	ITEM	PART NO.	DESCRIPTION
1.	B17B	Jack Handle	35.	DWM59	Brake Bushing
2.	BFR4	Jack Pin & Chain	36.	WM207	Brake Band
3.	BFR223	Jack	37.	WM210	Spring-Red
4.	SWM28	Light Bracket	38.	WM208	Brake Pad
5.	S414	Cap	39.	WM211	Brake Angle
6.	S415	Tube	40.	SWM3	Caster Mount
7.	S418	Cap W/Hole	41.	K132	Spacer
8.	S416	Hanger Bracket	42.	BFR57	Seal
9.	SWM5	Pole	43.	BFR58	Inner Bearing
10.	F56	Lynch Pin	44.	BFR59	Inner Race
11.	SWM36	Washer-Pivot	45.	BFR60	Hub
12.	SWM14	Pivot Pin	*	BFR67	Wheel 5 x 15 (3)
13.	DWM39	Torque Arm	*	BFR128	Tire 6.70 x 15SL (3)
14.	DF1	Hydraulic Motor	46.	BFR143	Stud Bolt
15.	DWM42	Right Motor Shield	47.	BFR144	Nut
16.	DWM27	Coupler	48.	BFR61	Outer Race
17.	DWM137	Cap Screw-Coupler	49.	BFR62	Outer Bearing
18.	DWM45	Motor Spacer	50.	BFR63	Washer
19.	23N108	Cotter Pins 7/32" x 2"	51.	BFR64	Nut
20.	BFR517	Cylinder Pin	52.	BFR65	Cotter Pin
21.	BFR69	Cylinder	53.	BFR66	Hub Cap
22.	DWM132	Pillow Block Bearing	54.	SWM29	Skirt
23.	DWM36	Anti-Wrap Guard	55.	SWM34	Tightener Arm
24.	SWM30	Head Spacer	56.	SWM33	Back Tightener Arm
25.	SWM11	Driver Roller	57.	K68	Washer 1/2"
26.	WM121	Key 5/16" x 1" Sq.	58.	DWM125	Spring-Blue
27.	DWM31	Shaft Shield	59.	DWM25	Tightener
28.	SWM19	Conveyor Belt	60.	R29	Nut 1/2"
29.	SWM37	Lacing Pin	61.	SWM10	Conveyor Roller
*	SWM38	Cross Conveyor Lacing	62.	SWM16	Skirt Belt
30.	SWM7	Main Frame	63.	DWM51	Male Torque Arm
31.	SWM2	Caster	64.	HE42	Hose Holder (6)
32.	BFR313	Roll Pin 5/16" x 2-3/4"	65.	23N67	Hose Holder (4)
33.	RG24	Bronze Washer 2"ID x 3"OD x 1/8"			
34.	BFR527	Bronze Bushing 2"ID x 2-1/4"OD x 2"			* (Means Not Shown)

5B10
 KEYS
 1 1/4 x 1

FIGURE 2

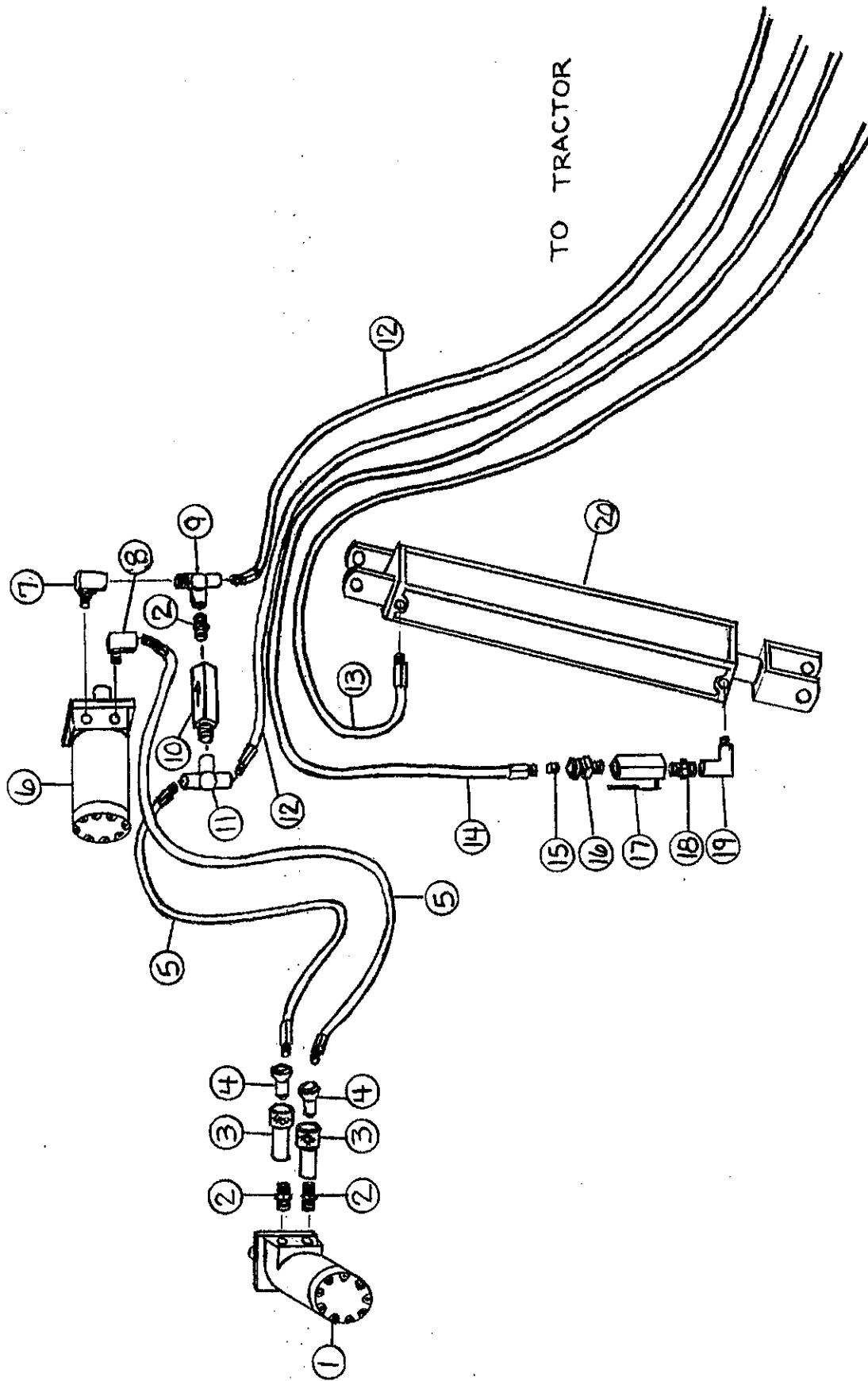
Matt



**FIGURE 2
MINI MERGER PICK-UP HEAD**

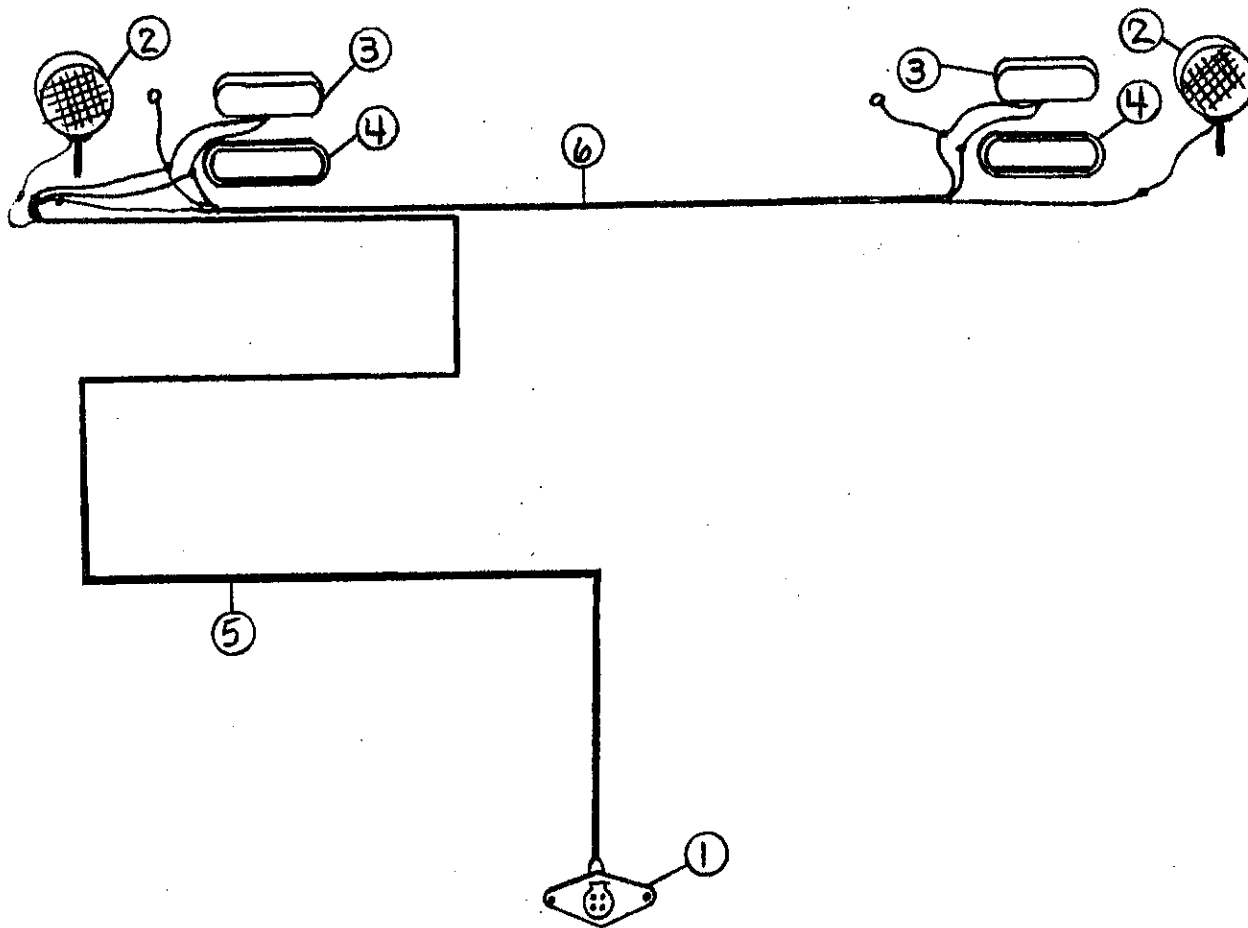
ITEM	PART NO.	DESCRIPTION	ITEM	PART NO.	DESCRIPTION
1.	SWM12	Pickup Lifter	32.	SWM31	Poly Wind Guard
2.	SWM30	Spacer	33.	SWM9	Wind Guard Holder
3.	RG132	Bushing 1-1/4" ID x 2" Long	34.	SWM32	Wind Guard
4.	SWM13	Pin	35.	DWM226	Right Wind Guard
5.	SWM15	Plastic Slides	36.	WM60	Wind Guard Rods
6.	SWM6	Back Roller	37.	SWM21	Pickup Belts (2) <i>Sum 56</i>
7.	WM121	Sq. Key 5/16" x 1"	Y 38.	SWM1 Swm 1	Pickup Teeth (260) <i>Sum 57</i>
8.	SWM8	Pickup Belt Frame	39.	SWM26	1/4" x 3/4" Elevator Bolts
9.	DWM3	Left Panel	40.	SWM27	1/4" Keps Lock Nuts
10.	DWM4	Right Panel	41.	SWM41	Lacing Pin
11.	WM180	Side Panel Slot Plate	*	SWM39	Alligator Lace
12.	WM187	Bearing Bracket RH	42.	DWM229	Gauge Arms
13.	WM186	Bearing Bracket LH	43.	CAT135A	Seal
14.	WM185	PVC Spacer	44.	CAT10	Bearing (2)
15.	F145	Heavy Duty Flage	45.	CAT9	Race (2)
16.	WM29	Bearing	46.	CAT177	Hub-Complete
17.	F143	Flange W/45 Deg. Zerk	47.	BFR144	Lug Nut
18.	WM27	Lock Collar	48.	CAT128	Stud
19.	DWM7	Pivot Pin	49.	CAT12	Spindle Nut
20.	F56	Lynch Pin	50.	BFR65	Cotter Pin
21.	DWM127	Clevis Pin	51.	CAT13	Hub Cap
22.	SWM40	3-Bolt Bearing Housing	*	SWM17	Wheel (2)
*	SWM35	3-Bolt Bearing Complete	*	SWM18	Tire 5.70-8 (2)
23.	DWM43	Head Shield	52.	ES7	Hair Pin
24.	DWM137	Cap Screw-Coupler	53.	WM183	Pivot Bushing
25.	DWM27	Coupler	54.	WM218	Washer
26.	DWM39	Hydraulic Motor Mount	55.	DWM171	1" Lock Washer
27.	DWM45	Motor Spacer	56.	DWM177	Bolt 1" x 2-1/2" GR.5 Full Thd.
28.	WM177	Hydraulic Motor	57.	DWM227	Wind Guard Washer
29.	WM179	Right Front Roller Bracket	58.	SWM49	Cotter Pin 7/32" x 2-1/2"
30.	SWM4	Front Roller			
31.	WM192	Left Front Roller Bracket			* (Means Not Shown)

FIGURE 3



**FIGURE 3
MINI MERGER HYDRAULICS**

ITEM	PART NO.	DESCRIPTION
1.	DF1	Hyd. Motor-Cross Conveyor
2.	WM141	1/2" Nipple Nut
3.	DWM206	Female Coupler
4.	DWM205	Male Coupler
5.	SWM23	Hose 1/2" x 42"
6.	WM177	Hyd. Motor-Pickup
7.	WM174	1/2" Male Adapter Union
8.	HE58	1/2" Street Elbow
9.	LW96	1/2" Street Tee
10.	DF18	1/2" Check Valve
11.	DF8	1/2" Tee
12.	SWM22	Hose 1/2" x 216"
13.	SWM24	Hose 1/4" x 180"
14.	SWM25	Hose 1/4" x 190"
15.	DWM135	Orifice .094
16.	BFR122	3/8" Male Adapter Union
*	DWM136	Adapter Union & Orifice
17.	16SV338	3/8" Ball Valve
18.	BFR188	3/8" Nipple Nut
19.	23N234	3/8" Street Elbow
20.	BFR69	2" x 8" Cylinder



**FIGURE 4
MINI MERGER ELECTRICAL WIRING / LIGHTS**

ITEM	PART NO.	DESCRIPTION
1.	SWM46	Plug In
2.	DWM129	Yellow Hazard Lights
3.	S310	Red Tail Lights
4.	S308	Rubber Light Mount
5.	SWM47	Main Wire
6.	SWM48	2nd Wire

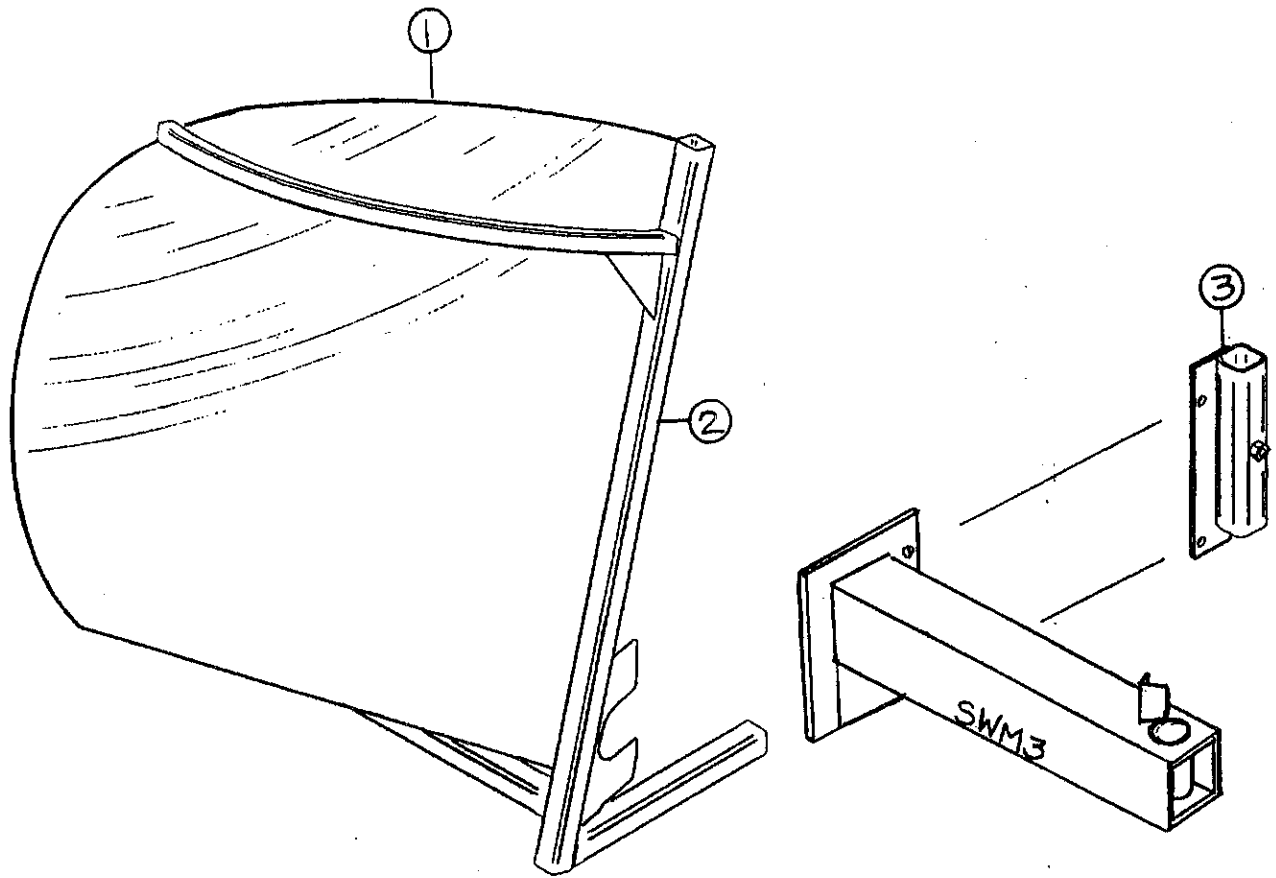


FIGURE 5
MINI MERGER OPTIONAL WINDROW INVERTER

ITEM	PART NO.	DESCRIPTION
1.	SWM50	Windrow Inverter Poly
2.	SWM51	Windrow Inverter Frame
3.	SWM52	Storage Mount

(NOTE: Storage Mount Bolts onto SWM3 Caster Mount - See Fig. 1)

FIGURE 6

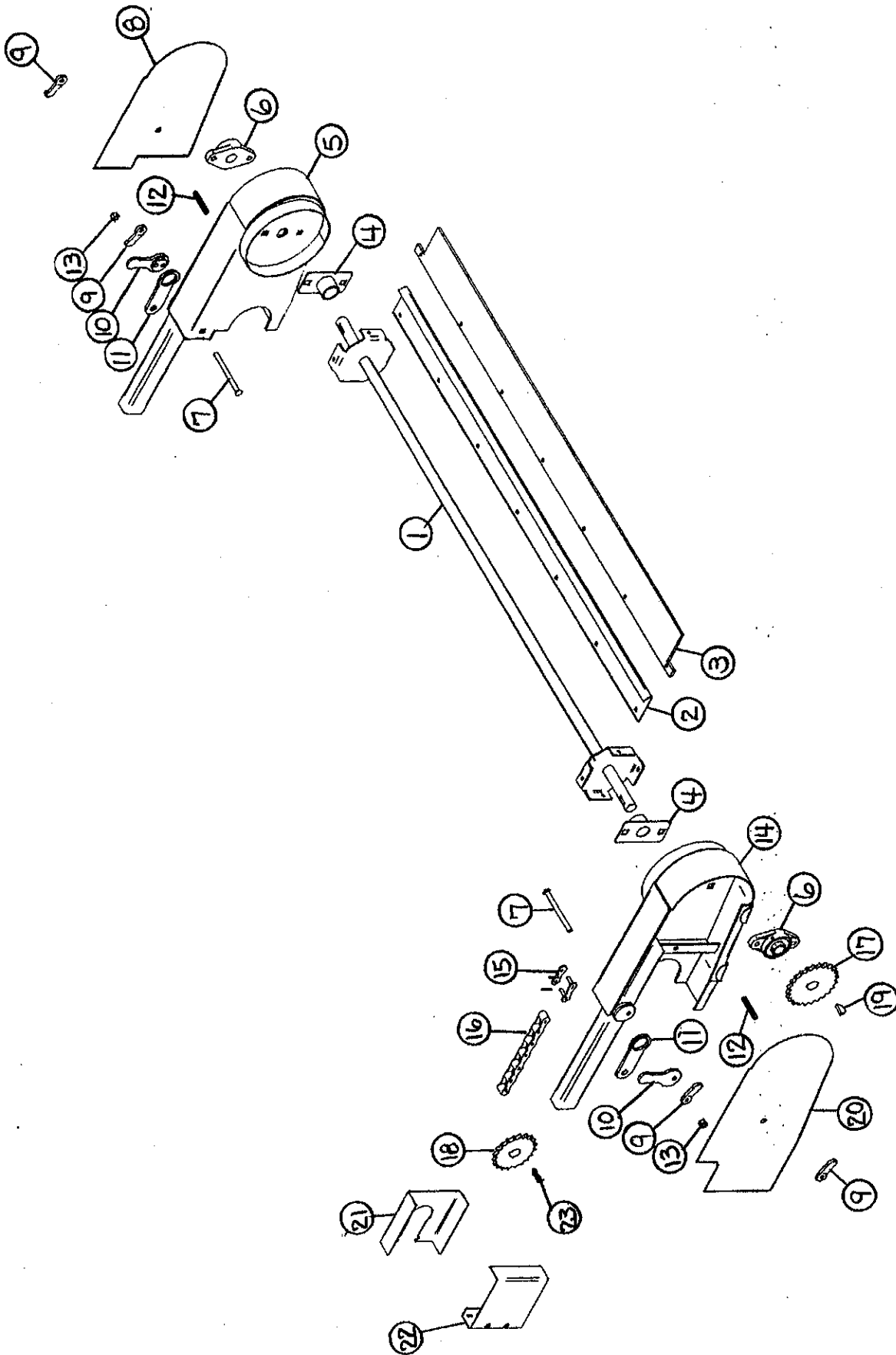
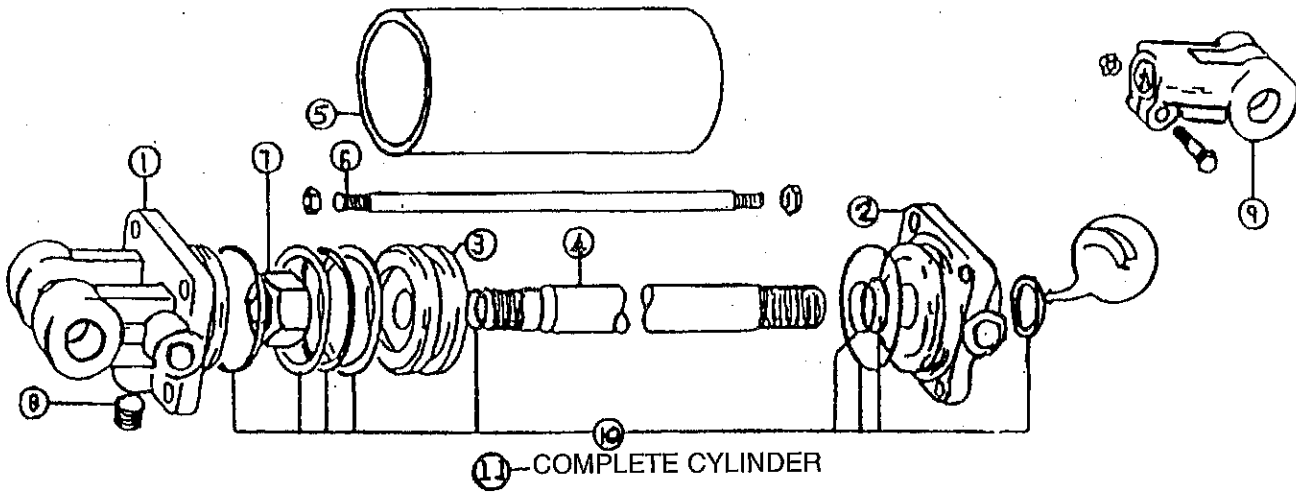


FIGURE 6
MINI MERGER OPTIONAL ACCELERATOR

ITEM	PART NO.	DESCRIPTION
1.	SWM42	Accelerator Shaft
2.	SWM43	Accelerator Plate
3.	SWM44	Rubber
4.	DWM211	Wrap Guard
5.	DWM208	Mounting Bracket 1
6.	DWM221	1" Bearing
7.	DWM222	3/8" x 5-1/2" Carriage Bolt GR.5
8.	DWM214	Shield 1
9.	DWM219	Handle Nut
10.	DWM210	Latch Handle
11.	DWM217	Latch
12.	DWM218	Ready Rod
13.	A14	3/8" Nylock Nut
14.	DWM209	Mounting Bracket 2
15.	X61	#50 Connector Link
16.	SWM53	#50 Roller Chain 57 Pitch
17.	X106	Sprocket 24T 1" Bore
18.	SWM45	Sprocket 17T 1-1/4" Bore
20.	DWM213	Shield
21.	DWM216	Sprocket Shield Back
22.	DWM215	Sprocket Shield
23.	S135	1/4" x 1-1/4" Sq. Key



**FIGURE 7
HYDRAULIC CYLINDER 8"**

ITEM	PART NO.	DESCRIPTION
1.	23N142	Clevis
2.	23N143	Rod Cap
3.	23N144	Piston
4.	T134	Rod
5.	BFR68	Cylinder Tube
6.	T186	Tie Rod
7.	23N148	Piston Nut
8.	23N149	Plug
9.	23N150	Rod Clevis
10.	23N151	Seal Kit
11.	BFR69	Complete Cylinder